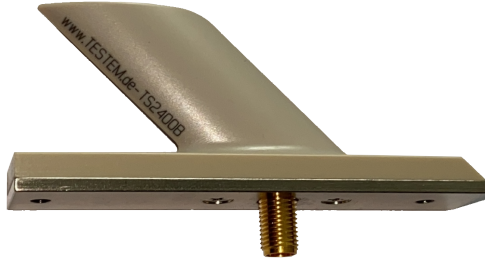


Airborne Blade Antenna S-Band

Type TS2400



The rugged airborne antenna model TS2400 is specially designed for applications onboard from aircrafts, drones and missiles. The antenna works alone or in multi antenna arrays with matching networks.

MECHANICAL SPECIFICATIONS

- Connector Type SMA female
- Antenna Height 32 mm (1.4 inch)
- Materials/Colours radome – high temperature milled plastic (beige TecaPeek), Mounting plate – Aluminium nickel plated
- Weight SMA 11,5 g (≤ 0.41 oz)

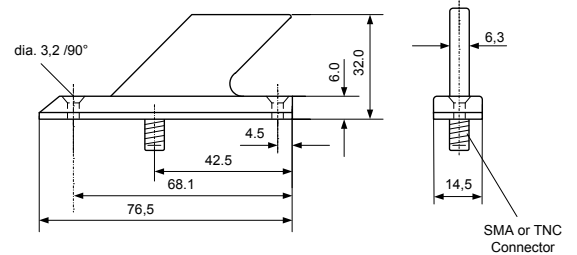
ENVIRONMENTAL SPECIFICATIONS

- Temperature Range -100°C to $+250^{\circ}\text{C}$ (-150°F to $+482^{\circ}\text{F}$) continuously operating, max. 450°C (842°F) for 20 sec.
- Maximum Speed max. 2.5 Mach at 15 km (50 000 ft.) altitude
Max. 5.0 Mach for 10 min.

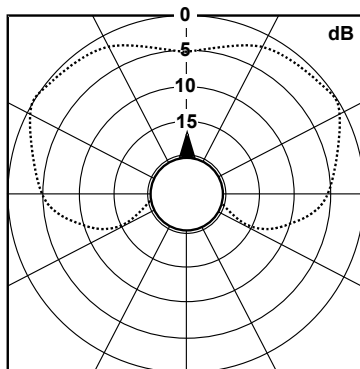
ELECTRICAL SPECIFICATIONS

- Frequency Range 2.2 to 2.4 GHz optional 2.3 to 2.5 GHz
- Polarisation linear
- Gain nom. 0 dBi
- Coverage omni directional
- Power Rating Max. CW 20W @ sea level,
10W @ 10 km
- Impedance 50 Ohms
- VSWR better than 1.5:1

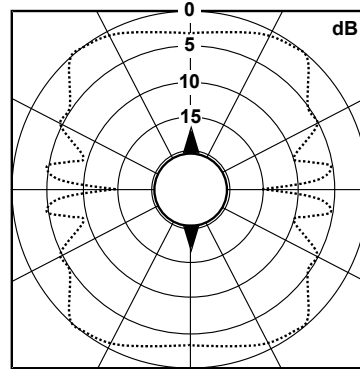
OUTLINE DIMENSIONS



TYPICAL ROLL PLANE PATTERNS for BLADE ANTENNA TS2400

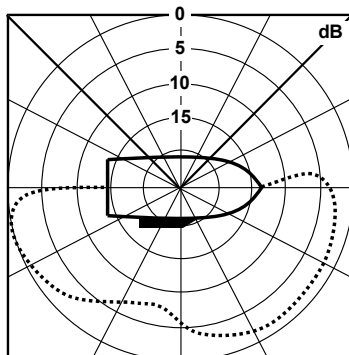


1 Antenna at 2300 MHz /150 mm dia.

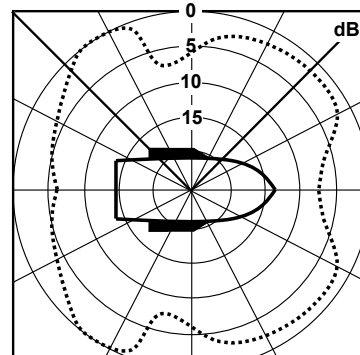


2 Antennas at 2300 MHz /150 mm dia.

TYPICAL YAW PLANE PATTERNS for BLADE ANTENNA TS2400



1 Antenna at 2300 MHz /150 mm dia.



2 Antennas at 2300 MHz /150 mm dia.